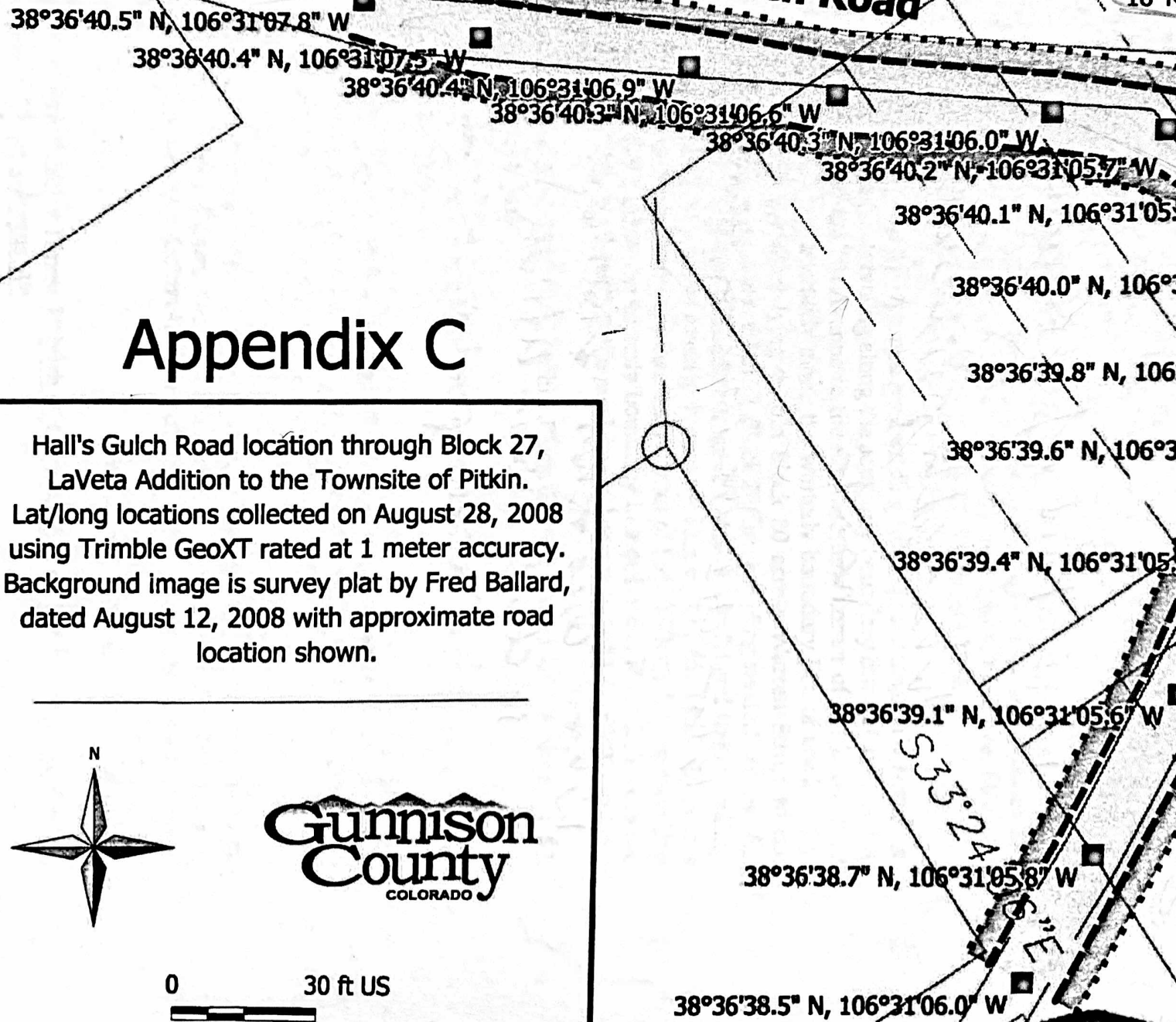




Hall's Gulch Road

16' Road Easement



Appendix C

Hall's Gulch Road location through Block 27, LaVeta Addition to the Townsite of Pitkin. Lat/long locations collected on August 28, 2008 using Trimble GeoXT rated at 1 meter accuracy. Background image is survey plat by Fred Ballard, dated August 12, 2008 with approximate road location shown.

